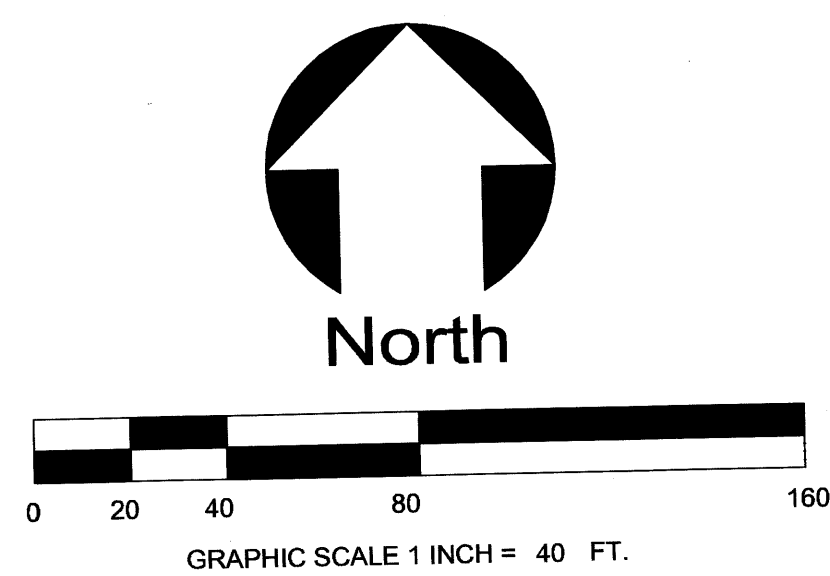


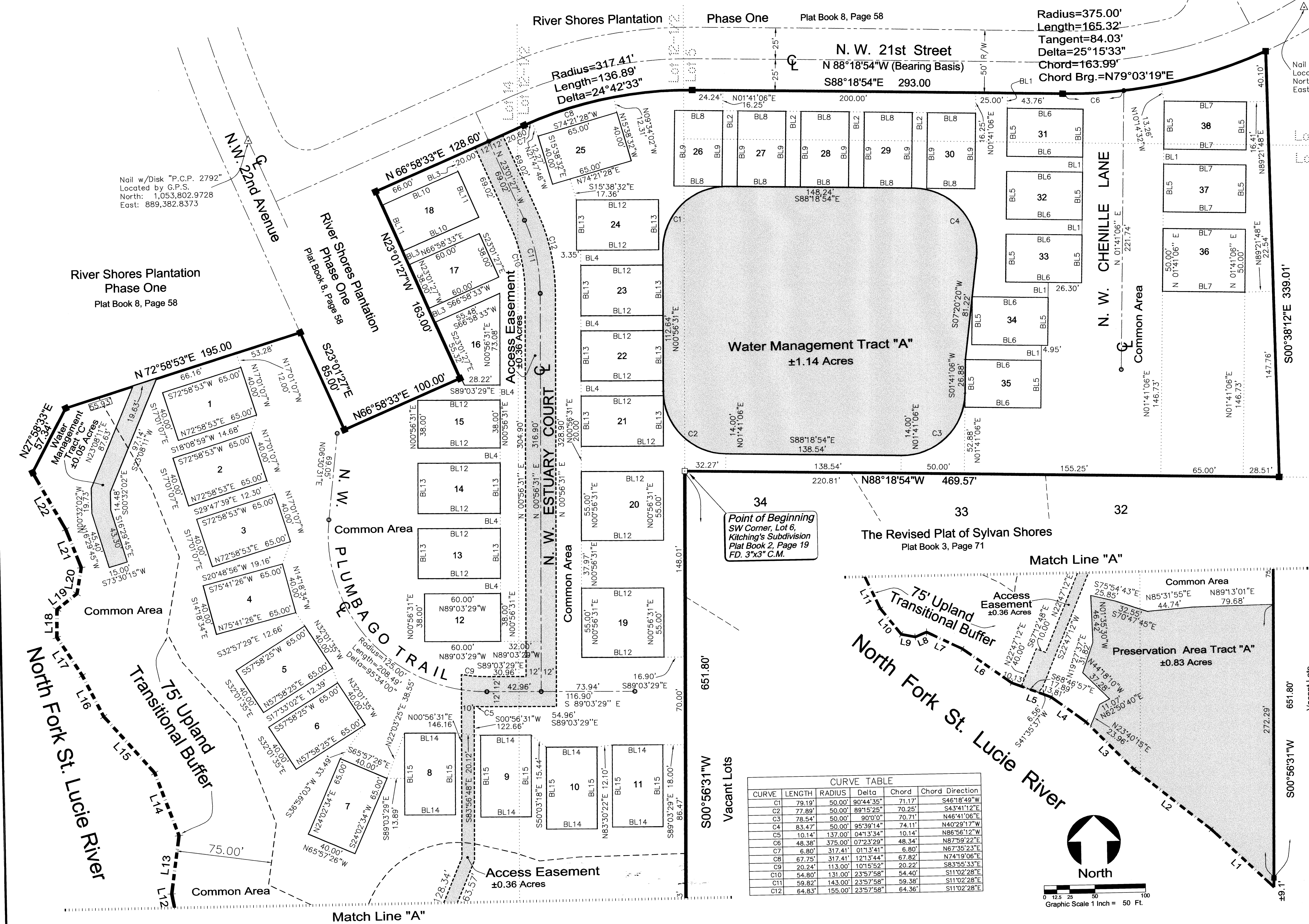
A Plat of Estuary P.U.D., Phase III

Being a Replat of a Portion of a re-subdivision of Lots 5, 6, 12 1/2 and 14 of Kitching's Subdivision, Plat Book 2, Page 19, as recorded in Public Records, St. Lucie County, (now Martin County) Florida, all lying in Section 30, Township 37 South, Range 41 East, Martin County, Florida.



LINE	LENGTH	BEARING
L1	84.83'	N45°51'45"W
L2	96.70'	N50°58'17"W
L3	67.05'	N43°56'46"W
L4	42.05'	N52°49'10"W
L5	41.83'	N68°46'57"W
L6	58.99'	N54°14'56"W
L7	39.17'	N63°34'12"W
L8	12.18'	S67°48'58"W
L9	14.06'	N78°13'56"W
L10	32.89'	N38°04'41"W
L11	35.17'	N24°45'54"W
L12	15.17'	N10°18'27"W
L13	47.13'	N08°10'10"E
L14	53.30'	N20°00'21"W
L15	60.32'	N40°45'23"W
L16	37.01'	N26°15'34"W
L17	36.28'	N32°22'56"W
L18	22.22'	N01°12'30"E
L19	20.12'	N52°50'39"E
L20	20.99'	N10°24'24"E
L21	33.08'	N20°48'50"W
L22	52.07'	N28°56'35"W

LINE	LENGTH	BEARING
BL1	12.00'	N01°41'06"E
BL2	12.00'	N88°18'54"W
BL3	12.00'	N23°01'27"W
BL4	12.00'	N00°56'31"E
BL5	38.00'	N01°41'06"E
BL6	60.00'	N88°18'54"W
BL7	65.00'	N88°18'54"W
BL8	38.00'	N88°18'54"W
BL9	60.00'	N01°41'06"E
BL10	65.00'	S66°58'33"W
BL11	40.00'	N23°01'27"W
BL12	65.00'	N89°03'29"W
BL13	40.00'	N00°56'31"E
BL14	40.00'	N89°03'29"W
BL15	65.00'	N00°56'31"E



Nail w/Disk "P.C.P. 2792"
Located by G.P.S.
North: 1,053,802.9728
East: 889,382.8373

River Shores Plantation
Phase One
Plat Book 8, Page 58

CURVE	LENGTH	RADIUS	Delta	Chord	Chord Direction
C1	79.19'	50.00'	90°44'35"	71.17'	S46°18'49"W
C2	77.89'	50.00'	89°15'25"	70.25'	S43°41'12"E
C3	78.54'	50.00'	90°0'0"	70.71'	N46°41'06"E
C4	83.47'	50.00'	95°39'14"	74.11'	N40°29'17"W
C5	10.14'	137.00'	04°13'34"	10.14'	N86°56'12"W
C6	48.38'	375.00'	07°23'29"	48.34'	N87°59'22"E
C7	6.80'	317.41'	01°13'41"	6.80'	N67°35'23"E
C8	67.75'	317.41'	12°13'44"	67.82'	N74°19'06"E
C9	20.24'	113.00'	10°15'52"	20.22'	S83°55'33"E
C10	54.80'	131.00'	23°57'58"	54.40'	S11°02'28"E
C11	59.82'	143.00'	23°57'58"	59.38'	S11°02'28"E
C12	64.83'	155.00'	23°57'58"	64.36'	S11°02'28"E

- NOTES**
- There shall be no buildings or any other kind of construction or trees or shrubs placed on drainage easements.
 - There shall be no buildings or other permanent structures placed on utility easements.
 - Where drainage and utility easements cross, drainage easements shall take precedence.
 - Benchmark elevations as shown are referenced to the National Geodetic Vertical Datum of 1929 (N.G.V.D. 29), and are referenced to Martin County Benchmark MAR-16, elevation 4.052 feet.
 - Interior centerlines are shown for graphic purposes only; are part of the common area; and are not separately dedicated on this plat.
 - Bearings refer to the centerline of N.W. 21st Street, having a Bearing of N 88°18'54"W, according to the plat of River Shores Plantation Phase 1, as recorded in Plat Book 8, Page 58 of the Public Records of Martin County, Florida.
 - In the event that Martin County disturbs the surface of a private street due to maintenance, repair or replacement of a public improvement located therein, then the county shall be responsible for restoring the street surface only to the extent which would be required if the street were a public street, in accordance with county specifications.
 - = Found P.R.M., a Found 4"x4" Concrete Monument Unnumbered.
 - = Set P.R.M., a Found 4"x4" Concrete Monument with Disk Stamped P.L.S. 3336.
 - = Set P.C.P., a P.K. Nail and Washer Stamped P.L.S. 3336.

NOTICE

1. This plat, as recorded in its original form in the public records, is the official depiction of the subdivided lands described hereon and will in no circumstances be supplanted in authority by any other form of the plat, whether graphic or digital. There may be additional restrictions that are not recorded on this plat that may be found in the public records of this county.

PREPARED BY:

ASLAN, inc.
 CONSULTANTS • PLANNERS SURVEYORS
 LAND INFORMATION SERVICES
 2440 S.E. Federal Highway - Suite 700
 Stuart, FL 34994 (561) 288-4880 Fax 288-0128